

Mini-needle anesthesia technique

Michel Labrecque MD PhD

Department of Family
and Emergency Medicine

Laval University
Quebec City
Canada

Anesthesia

What average pain level should be achieved on a scale 0-10:

- during anesthesia?
- during surgery?

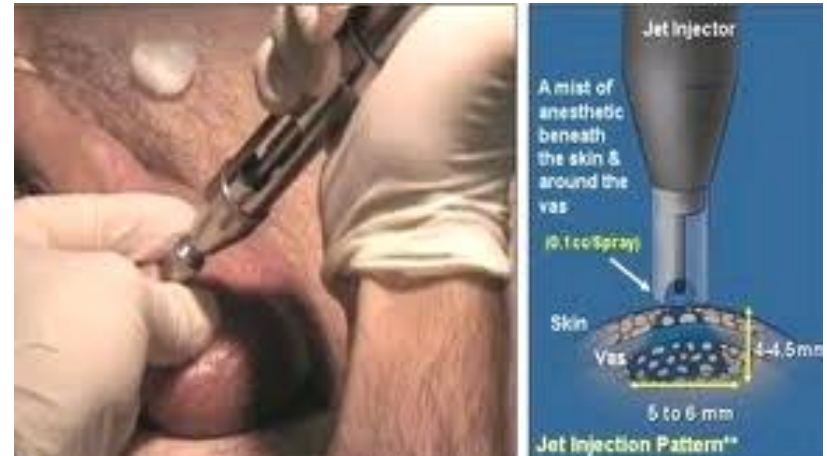
- How much lidocaine are you using in total ?

The Jet Gun Technique (No Needle)



0.1 cc/shot x 2-3
shots per side
Total=0.4 - 0.6 cc

Average pain level
1.7/10 during anesthesia
0.7/10 during surgery
Weiss 2005



The Mini-Needle Technique

- 30 gauge needle 1"
- 2 or 3 cc syringe
- **2 cc lidocaine**
- 0.5 cc injected in and around the vas at the level of the intended surgical site



Average pain level
1.5/10 during anesthesia
0.6/10 during surgery

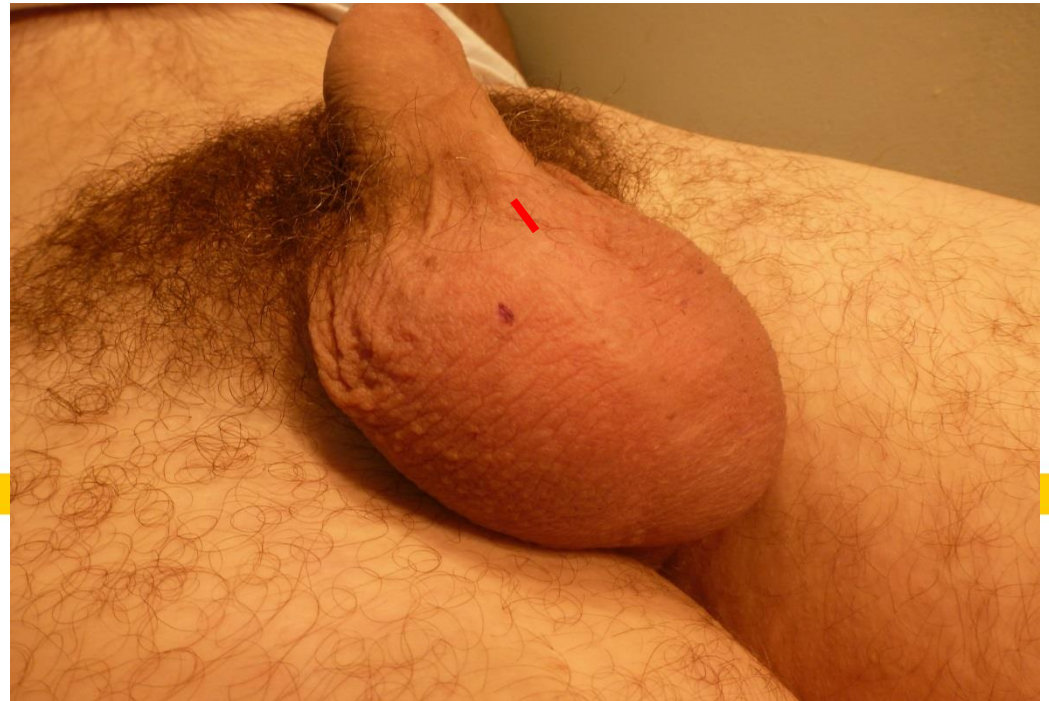
Shih 2010

1. Superficial skin wheal 0.5cc



Tip #1

Make the skin wheal at the junction of the penis and the scrotum



To Avoid the Convulated Section of the Vas...





2. Left vas anesthesia 0.5cc

skin wheal

Tip #2

Inject in between your fingers at the surface the vas (touching the vas with the tip of the needle)

Tip #3

Once you are well located inject 0.5 cc





2. Left vas anesthesia 0.5cc

Tip #4

The tip of the needle may enter the vas wall. You may then not be able to inject. Just move the needle in any direction (half a mm) and try injecting again.

Tip #5

Do not poke in and out to avoid piercing vessels..

3. Right vas anesthesia 0.5cc

